

FSD-Series Cartridge Filter

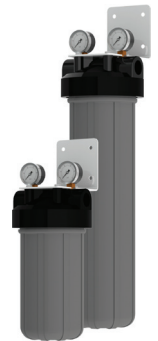
AXEON FSD - Series Cartridge Filter Pre/Post Treatment Systems feature a compact single, double, or triple stage design and are available with $\frac{3}{4}$ " or 1" ports. These systems are ideal for water treatment applications that require additional pre- or post-treatment.

Benefits

- High Quality Components
- Customizable with Any Cartridge
- Accommodates Standard 4.5" Diameter Cartridges
- Pre-Assembled and Easy to Install
- 1 - Year Limited Warranty
- Made in the U.S.A.

FSD - 100 Standard Features

- AXEON® 0 - 100 psi Pressure Gauges
- 4.5" Diameter Grey and Black AXEON by Pentair® Cartridge Housing in 10" or 20" Lengths
- White Powder Coated Bracket
- Filter Housing Wrench



FSD - 200 Standard Features

- AXEON 0 - 100 psi Pressure Gauges
- 4.5" Diameter Grey and Black AXEON by Pentair Cartridge Housings in 10" or 20" Lengths
- White Powder Coated Bracket
- Filter Housing Wrench



FSD - 300 Standard Features

- AXEON 0 - 100 psi Pressure Gauges
- 4.5" Diameter Grey and Black AXEON by Pentair Cartridge Housings in 10" or 20" Lengths
- White Powder Coated Bracket



Engineered Water Treatment Solutions

FSD-Series Cartridge Filter

Part Number	Description	Port Size (in)	System Size in (cm)
FSD-100-Series			
200086	FSD - 110 Filtration System*	¾ FNPT	8.00 x 7.50 x 17.50 (20.32 x 19.05 x 44.50)
200087	FSD - 110 Filtration System*	1 FNPT	8.00 x 7.50 x 17.50 (20.32 x 19.05 x 44.50)
200088	FSD - 120 Filtration System*	¾ FNPT	8.00 x 7.50 x 27.50 (20.32 x 19.05 x 69.85)
200089	FSD - 120 Filtration System*	1 FNPT	8.00 x 7.50 x 27.50 (20.32 x 19.05 x 69.85)
FSD-200-Series			
200090	FSD - 210 Filtration System*	¾ FNPT	8.00 x 15.00 x 17.50 (20.32 x 38.10 x 44.50)
200091	FSD - 210 Filtration System*	1 FNPT	8.00 x 15.00 x 17.50 (20.32 x 38.10 x 44.50)
200092	FSD - 220 Filtration System*	¾ FNPT	8.00 x 15.00 x 27.50 (20.32 x 38.10 x 69.85)
200093	FSD - 220 Filtration System*	1 FNPT	8.00 x 15.00 x 27.50 (20.32 x 38.10 x 69.85)
FSD-300-Series			
200094	FSD - 310 Filtration System*	¾ FNPT	8.00 x 22.50 x 17.50 (20.32 x 57.15 x 44.50)
200095	FSD - 310 Filtration System*	1 FNPT	8.00 x 22.50 x 17.50 (20.32 x 57.15 x 44.50)
200096	FSD - 320 Filtration System*	¾ FNPT	8.00 x 22.50 x 27.50 (20.32 x 57.15 x 69.85)
200097	FSD - 320 Filtration System*	1 FNPT	8.00 x 22.50 x 27.50 (20.32 x 57.15 x 69.85)

* Cartridges Sold Separately

Typical Installation Diagram for Water Filtration System

Operating Specifications
Minimum Temperature: 40°F
Maximum Temperature: 100°F
Minimum Operating Pressure: 45 psi
Maximum Operating Pressure: 85 psi
Set pressure regulator to 75 psi

* Not to be installed outdoors or in areas exposed to extreme climate conditions or outside of operating specifications.
 ** Pressure regulator highly recommended.

Materials of Construction	
Housing	Polypropylene
Cap	Polypropylene (HFPP)
O-Ring	Buna-N

